

Focus On... **Hunger** Charlotte County

In July 2020 approximately **1,903,426** people in Florida were experiencing food scarcity according to the US Census Household Pulse Survey.

"Since the pandemic, we have experienced up to an 80% increase in the demand for food." - *Harry Chapin Food Bank of Southwest Florida, July 24, 2020*

22% of Children in Charlotte County are food insecure. Food insecurity is the state of being without reliable access to a sufficient quantity of affordable, nutritious food. **96%** of those children are income-eligible for nutrition programs.¹



The average meal cost per person in Charlotte County is **\$3.38**.¹ The maximum benefit for the food assistance program in Florida pays **\$2.15** per person per meal.⁴

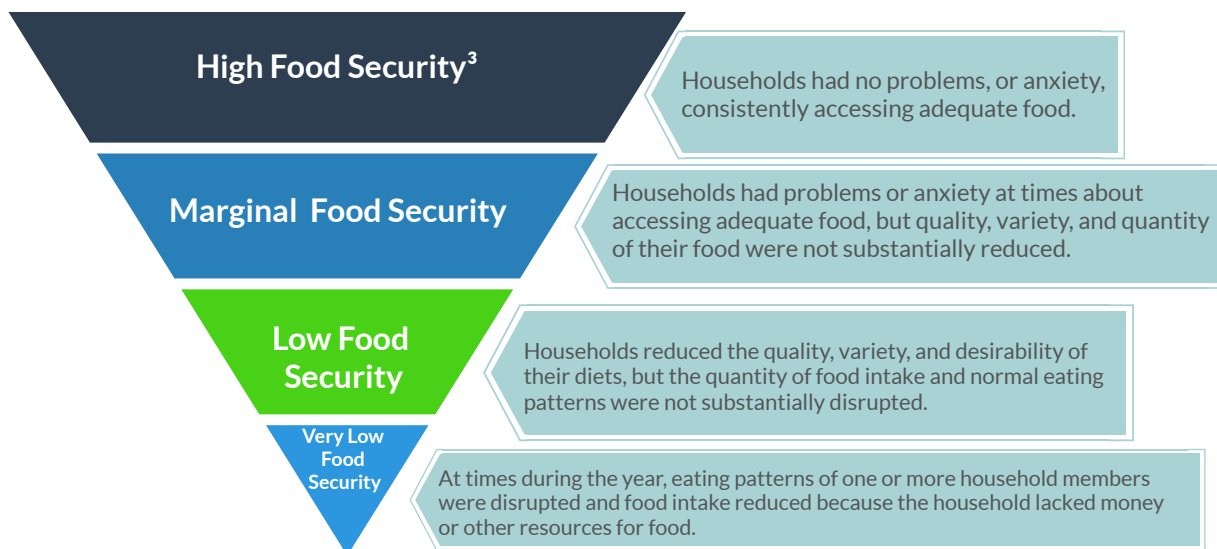
The food environment index in Charlotte County is **7.0**. The index ranges from a scale of 0 (worst) to 10 (best).²



14% percent of the population are considered low-income and do not live near a grocery store in Charlotte County.²



13% of people living in Charlotte County are food insecure. **70%** of the county residents are below SNAP and other nutrition programs threshold of 200% poverty line, this is slightly below Florida, **72%**.¹



For more information please visit our website [Hpcswf.com/health-planning/fact-sheet/](https://hpcswf.com/health-planning/fact-sheet/)

Throughout the entire document when referring to food insecurity, this means that they are either low food or very low food secure.

¹ Map the Meal Gap, Feeding America, 2018 ² County Health Rankings, 2020 ³ Adapted from the USDA Economic Research Service ⁴ Department of Children and Families 2019

HPC encourages you to think about next steps to improve hunger in Southwest Florida. You may want to get involved, get help, get assistance, get informed, and/or get more data.

Get Help

Florida Food Assistance Program

- Myflfamilies.com
- The Food Assistance Program helps people with low-income buy healthy food.

Women, Infants, and Children (WIC)

- Floridahealth.gov
- WIC provides the following at no cost: healthy foods, nutrition education and counseling, breastfeeding support, and referrals for health care and community services.

Collier County Homeless and Hunger Coalition

- collierhomelesscoalition.org
- To facilitate solutions to prevent and end hunger and homelessness by coordinating services in Collier County.

Find resources at swflresourcecenter.com

Get Informed

United States Department of Agriculture, Economic Research Service

- Ers.usda.gov
- The mission of USDA's Economic Research Service is to anticipate trends and emerging issues in agriculture, food, the environment, and rural America and to conduct high-quality economic research to inform and enhance decision making.

Centers of Disease Control and Prevention

- Cdc.gov
- CDC works 24/7 to protect America from health, safety and security threats.

Feeding America

- Feedingamerica.org
- to feed America's hungry through a nationwide network of member food banks and engage our country in the fight to end hunger.

Get Involved

Harry Chapin Food Bank of Southwest Florida

- Harrychapinfoodbank.org
- The largest hunger-relief network in Southwest Florida, serving Charlotte, Collier, Glades, Hendry and Lee counties.

Community Cooperative

- Communitycooperative.com
- Eliminate hunger and homelessness in Lee County while simultaneously inspiring and supporting sustained positive change in its clients.

All Faiths Food Bank

- Allfaithsfoodbank.org
- The only food bank and largest hunger relief organization in Sarasota and DeSoto counties.

Feeding Florida

- Feedingflorida.org/
- Is the state's network of food banks working to solve hunger.

Get Data

- [Map the Meal Gap, Feeding America](#)
- [County Health Ranking](#)
- [Florida Health Charts](#)
- [Harry Chapin Food Bank of Southwest Florida](#)
- [US Census Bureau Household Pulse Survey](#)
- [Department of Children and Families](#)

Get More

For more information please visit our website Hpcswf.com/health-planning/fact-sheet/

Interested in receiving future Fact Sheets? Visit hpcswf.com/health-planning/fact-sheet/ to join our distribution list.

