

Focus On... Hunger

Lee County

In 2020 approximately **2,252,050** people in Florida were experiencing food scarcity according to the US Census Household Pulse Survey.

"Since the pandemic, we have experienced up to an **80%** increase in the demand for food." - Harry Chapin Food Bank of Southwest Florida, July 24, 2020

17% of Children in Lee County are food insecure. Food insecurity is the state of being without reliable access to a sufficient quantity of affordable, nutritious food. **77%** of children are income-eligible for nutrition programs.¹



The average meal cost per person is **\$3.65**.¹ On average, SNAP participants received an estimated about **\$4.16** a day per person in regular SNAP benefits in fiscal year 2021.⁴

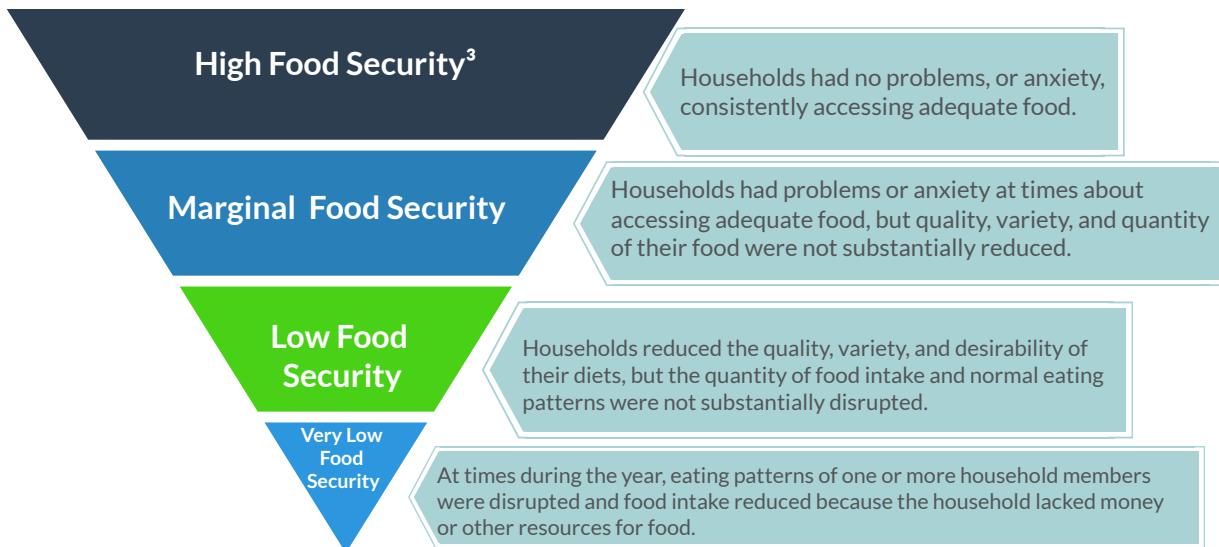
The food environment index in Lee County is **7.4**. The index ranges from a scale of 0 (worst) to 10 (best).²



12% percent of the population are considered low-income and do not live near a grocery store in Lee County.²



11% of people living in Lee County are food insecure. **70%** of the county residents are below SNAP and other nutrition programs threshold of 200% poverty line, this slightly lower than Florida, **73%**.¹



For more information please visit our website [Hpcswf.com/health-planning/fact-sheet/](https://hpcswf.com/health-planning/fact-sheet/)

Throughout the entire document when referring to food insecurity, this means that they are either low food or very low food secure.

1 Map the Meal Gap, Feeding America, 2020 2 County Health Rankings, 2022 3 Adapted from the USDA Economic Research Service 4 Center on Budget & Policy Priorities 2022

HPC encourages you to think about next steps to improve hunger in Southwest Florida. You may want to get involved, get help, get assistance, get informed, and/or get more data.

Get Help

Florida Food Assistance Program

- Myflfamilies.com
- The Food Assistance Program helps people with low-income buy healthy food.

Women, Infants, and Children (WIC)

- Floridahealth.gov
- WIC provides the following at no cost: healthy foods, nutrition education and counseling, breastfeeding support, and referrals for health care and community services.

Collier County Homeless and Hunger Coalition

- collierhomelesscoalition.org
- To facilitate solutions to prevent and end hunger and homelessness by coordinating services in Collier County.

Find resources at swflresourcelink.com

Get Informed

United States Department of Agriculture, Economic Research Service

- Ers.usda.gov
- The mission of USDA's Economic Research Service is to anticipate trends and emerging issues in agriculture, food, the environment, and rural America and to conduct high-quality economic research to inform and enhance decision making.

Centers of Disease Control and Prevention

- Cdc.gov
- CDC works 24/7 to protect America from health, safety and security threats.

Feeding America

- Feedingamerica.org
- to feed America's hungry through a nationwide network of member food banks and engage our country in the fight to end hunger.

Get Involved

Harry Chapin Food Bank of Southwest Florida

- Harrychapinfoodbank.org
- The largest hunger-relief network in Southwest Florida, serving Charlotte, Collier, Glades, Hendry and Lee counties.

Community Cooperative

- Communitycooperative.com
- Eliminate hunger and homelessness in Lee County while simultaneously inspiring and supporting sustained positive change in its clients.

All Faiths Food Bank

- Allfaithsfoodbank.org
- The only food bank and largest hunger relief organization in Sarasota and DeSoto counties.

Feeding Florida

- Feedingflorida.org/
- Is the state's network of food banks working to solve hunger.

Get Data

- [Map the Meal Gap, Feeding America](#)
- [County Health Ranking](#)
- [Florida Health Charts](#)
- [Harry Chapin Food Bank of Southwest Florida](#)
- [US Census Bureau Household Pulse Survey](#)
- [Department of Children and Families](#)



Get More

For more information please visit our website Hpcswf.com/health-planning/fact-sheet/

Interested in receiving future Fact Sheets? Visit hpcswf.com/health-planning/fact-sheet/ to join our distribution list.

