

# Focus On... Unintentional Injury

## Lee County

### 2021 Leading Causes of Fatal Injury, All Ages<sup>1</sup>

#### Lee County

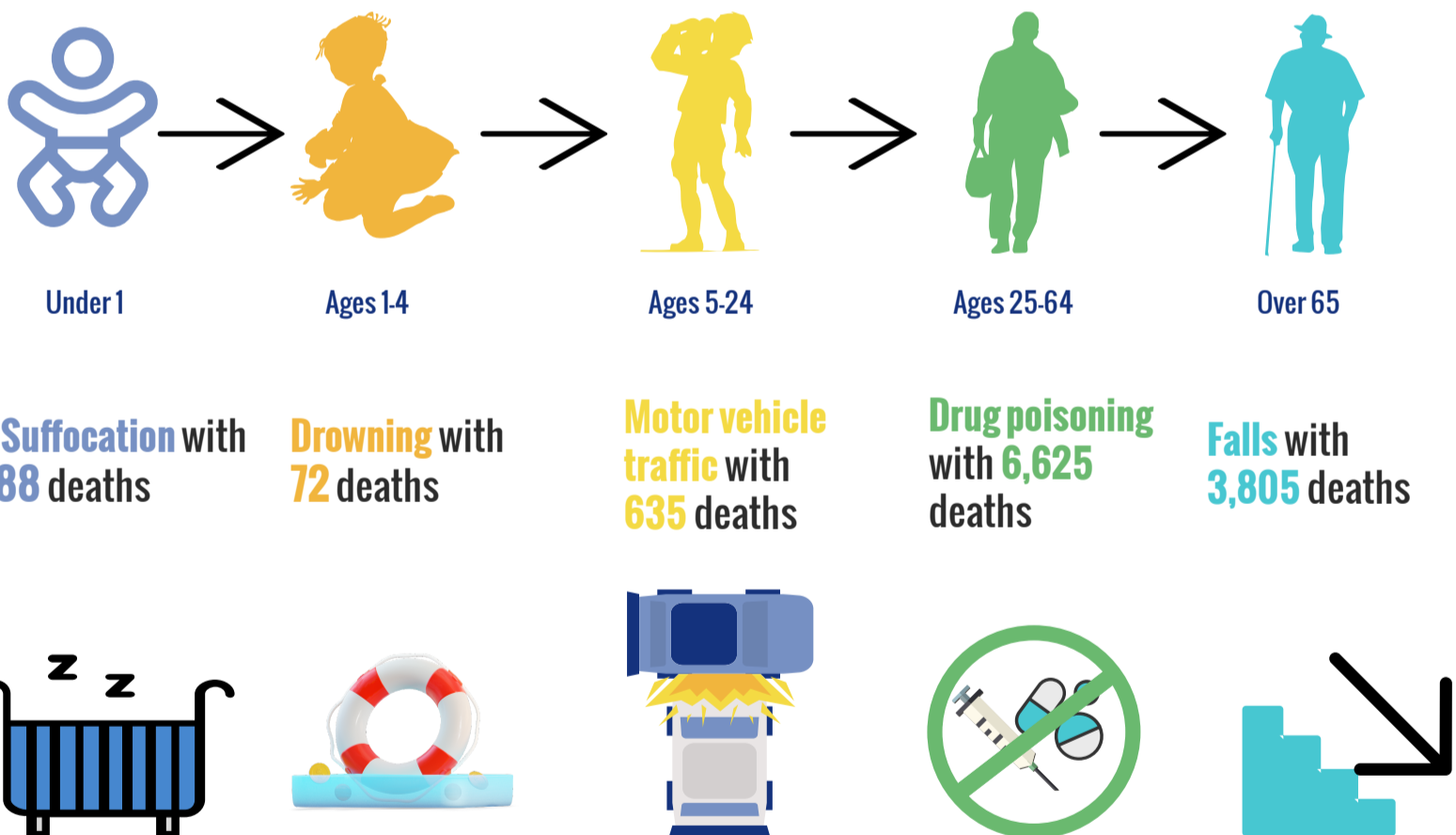


#### Florida



We compared the fatal injury rates of each category between the county and the state. If the data category is in **green** that means the rate is **better** than the Florida average, if it is **red** it is **worse** than the Florida average.

### Leading Cause of Fatal Unintentional Injury in Florida Through the Ages, 2021<sup>1</sup>



The death rate from unintentional injury by drug poisoning in Lee County from 2019-2021 is **significantly greater** than the Florida average (41.6 vs. 30.4).

In Lee County, the rate has **significantly increased** from 32.7 per 100,000 in 2016-2018 to 41.6 per 100,000 in 2019-2021<sup>1</sup>



<sup>1</sup> Florida Department of Health, Bureau of Vital Statistics

For more information scan the QR code

HPC encourages you to think about next steps to improve unintentional injuries in Southwest Florida. You may want to **get involved, get informed, and/or get more data.**

## Get Involved

### Safe Kids Southwest Florida

- [Safekidsswfl.org](http://Safekidsswfl.org)
- This coalition implements evidence-based programs, such as car-seat checkups, safety workshops, and sports clinics, that help parents and caregivers prevent childhood injuries.

### Healthy Lee

- [Healthylee.com/](http://Healthylee.com/)
- The Healthy Lee movement was created to empower and inspire the people of Lee County regarding healthy lifestyle choices through education and action.

### Drug Free Lee

- [Drugfreelee.org/](http://Drugfreelee.org/)
- Our Mission is to “reduce substance abuse in Lee County by raising awareness of prevention resources through collaboration, education and inspiration.”

### Hanley Foundation

- [Hanleyfoundation.org](http://Hanleyfoundation.org)
- At Hanley Foundation, we are dedicated to changing the face of addiction through prevention, advocacy, treatment, and recovery support.

### Area Agency on Aging for Southwest Florida

- [Aaaswfl.org](http://Aaaswfl.org)
- AAASWFL is committed to connecting older adults and adults with disabilities to resources and assistance for living safely with independence and dignity.

### Florida Department of Elder Affairs

- [Elderaffairs.org](http://Elderaffairs.org)
- The major focus of DOEA is to provide home and community-based services to seniors who are at risk of being placed into a long-term care facility because of their degree of frailty.

### Florida Falls Prevention Coalition

- [Ncoa.org/article/florida-state-falls-prevention-coalition](http://Ncoa.org/article/florida-state-falls-prevention-coalition)
- Falls prevention coalition can bring together organizations and providers that need to collaborate to reduce falls, identify state or community needs, recommend policy changes, and build capacity.

## Get Informed

### University of Rochester Medical Center

- [Urmc.rochester.edu](http://Urmc.rochester.edu)
- This page provides an overview of preventing unintentional injuries.

### Healthy People 2030

- [Health.gov](http://Health.gov)
- Healthy People identifies public health priorities to help improve health and well-being across the United States.

### Florida Department of Health

- [Floridahealth.gov](http://Floridahealth.gov)
- The Florida Department of Health works to protect, promote, and improve the health of all people in Florida through integrated state, county, and community efforts.

## Get Data

- [Leading Causes of Fatal Injury Dashboard](#)
  - [Flhealthcharts.gov/charts/OpenPage.aspx?tn=671](http://Flhealthcharts.gov/charts/OpenPage.aspx?tn=671)
- [Fatal Injuries Profile](#)
  - [Flhealthcharts.gov/ChartsReports/rdPage.aspx?rdReport=ChartsProfiles.InjuryProfileDASHBOAR](http://Flhealthcharts.gov/ChartsReports/rdPage.aspx?rdReport=ChartsProfiles.InjuryProfileDASHBOAR)
- [Florida Health Charts](#)
  - [Flhealthcharts.gov/](http://Flhealthcharts.gov/)



For more information please visit our website [Hpcswf.com/health-planning/fact-sheet/](http://Hpcswf.com/health-planning/fact-sheet/)

Interested in receiving future Fact Sheets? Please send an email to [Planning@hpcswf.com](mailto:Planning@hpcswf.com)