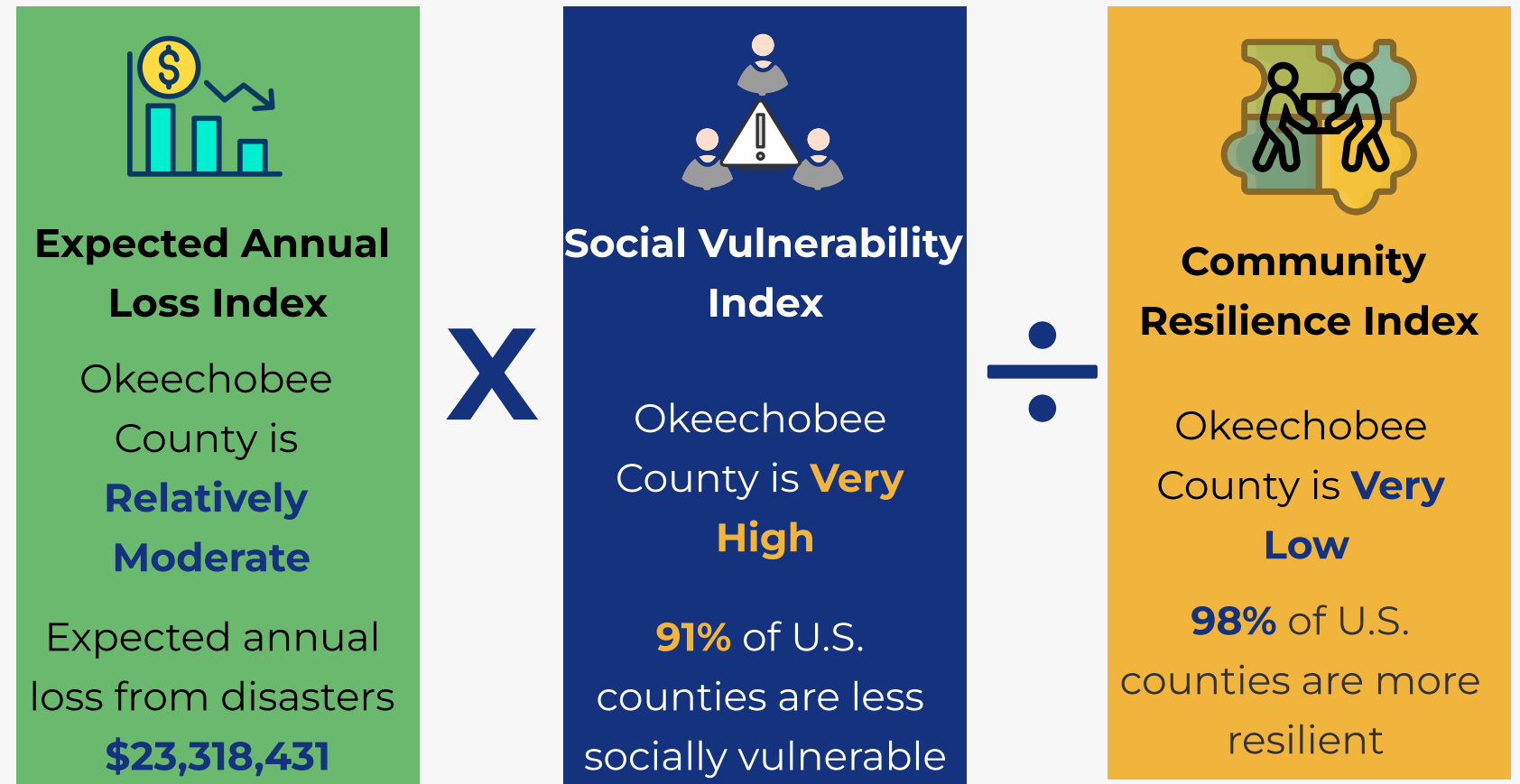


Disaster Preparedness

Okeechobee County

Okeechobee County's Risk index is Relatively Moderate

The National Risk Index is a dataset and online tool to help illustrate communities most a risk for 18 natural disasters. It is calculated using the formula below



What can a community do to become more resilient?



Some Examples Include:

- Mental health support
- Personal transportation access
- Communication capacity
- Evacuation routes

- Temporary shelter availability
- Access to internet
- Flood insurance coverage
- Disaster aid experience



- Local disaster training
- Strong volunteer base
- Local food supplies
- Natural flood buffers
- Studier housing types



What are some factors that make a community more vulnerable?

- Socioeconomic status**
 - Poverty
- Household characteristics**
 - Aged 65 and older
- Racial & ethnic minority status**
 - Non-English speaker
- Housing type & transportation**
 - Mobile home

Top 5 Hazards

 Wildfire

 Hurricane

 Lightning

 Cold Wave

 Drought

For more information please visit Swflcoalition.org

All data came from the FEMA National Risk Index

Disaster Preparedness

Okeechobee County

National/State Resources

FEMA National Risk Index

- [Hazards.fema.gov/nri/learn-more](https://hazards.fema.gov/nri/learn-more)
- Learn more about the National Risk Index dataset and online tool

Florida Emergency Management

- [Floridadisaster.org/](https://floridadisaster.org/)
- The official website of the Florida Division of Emergency Management

ASPR TRACIE

- [Asprtracie.hhs.gov/](https://asprtracie.hhs.gov/)
- Technical Resources, Assistance Center, and Information Exchange (TRACIE) was created to provide information and technical assistance

NOAA, National Hurricane Center

- [Nhc.noaa.gov](https://nhc.noaa.gov)
- The mission is to save lives, mitigate property loss, improve economic efficiency, and increase understanding of the hazards.

Ready.gov

- [Ready.gov](https://ready.gov)
- National public service campaign designed to educate and empower the American people to prepare for, respond to, and mitigate emergencies and disasters.

Florida Healthcare Coalition

- [Floridahcc.org/](https://floridahcc.org/)
- Official site of the Florida Healthcare Coalitions

Local Resources

Southwest Florida Healthcare Coalition

- [Swflcoalition.org/](https://swflcoalition.org/)
- The mission of the Southwest Florida Healthcare Coalition is to develop healthcare emergency preparedness response and recovery capabilities through collaboration, training, and planning

Okeechobee County Emergency Management

- [Okeechobeecountyfl.gov](https://okeechobeecountyfl.gov)
- The official website of Okeechobee County's Emergency Management

Florida Department of Health in Okeechobee County

- [Okeechobee.floridahealth.gov](https://okeechobee.floridahealth.gov)
- The Public Health Preparedness Program (PHPP) coordinates planning and preparedness activities for all-hazards public health emergencies for the FDOH-Okeechobee

Your Personal Preparedness

Special Needs Shelter

- [Floridahealth.gov/spns](https://floridahealth.gov/spns)
- Learn more about special needs shelters and how to register

Disaster Preparedness Maps

- [Floridadisaster.org/disaster-preparedness-map](https://floridadisaster.org/disaster-preparedness-map)
- Evacuation zone and route maps and storm surge maps

Disaster Preparedness Checklist

- [Floridadisaster.org/checklist](https://floridadisaster.org/checklist)
- Access to a downloadable checklist

Florida Hurricane Guide

- [Floridadisaster.org/florida-hurricane-guide](https://floridadisaster.org/florida-hurricane-guide)
- The official 2024 Florida Hurricane Guide

For more information please visit [Swflcoalition.org](https://swflcoalition.org)

All data came from the [FEMA National Risk Index](https://hazards.fema.gov/nri/)