



HEALTH
PLANNING
COUNCIL
OF SOUTHWEST FL


HEALTH FOCUSED COMMUNITY DRIVEN




Protecting Our Children: A Webinar on Preventing Fatal Injuries

April 22, 2025

Welcome

 Come on camera, we'd love to see you.

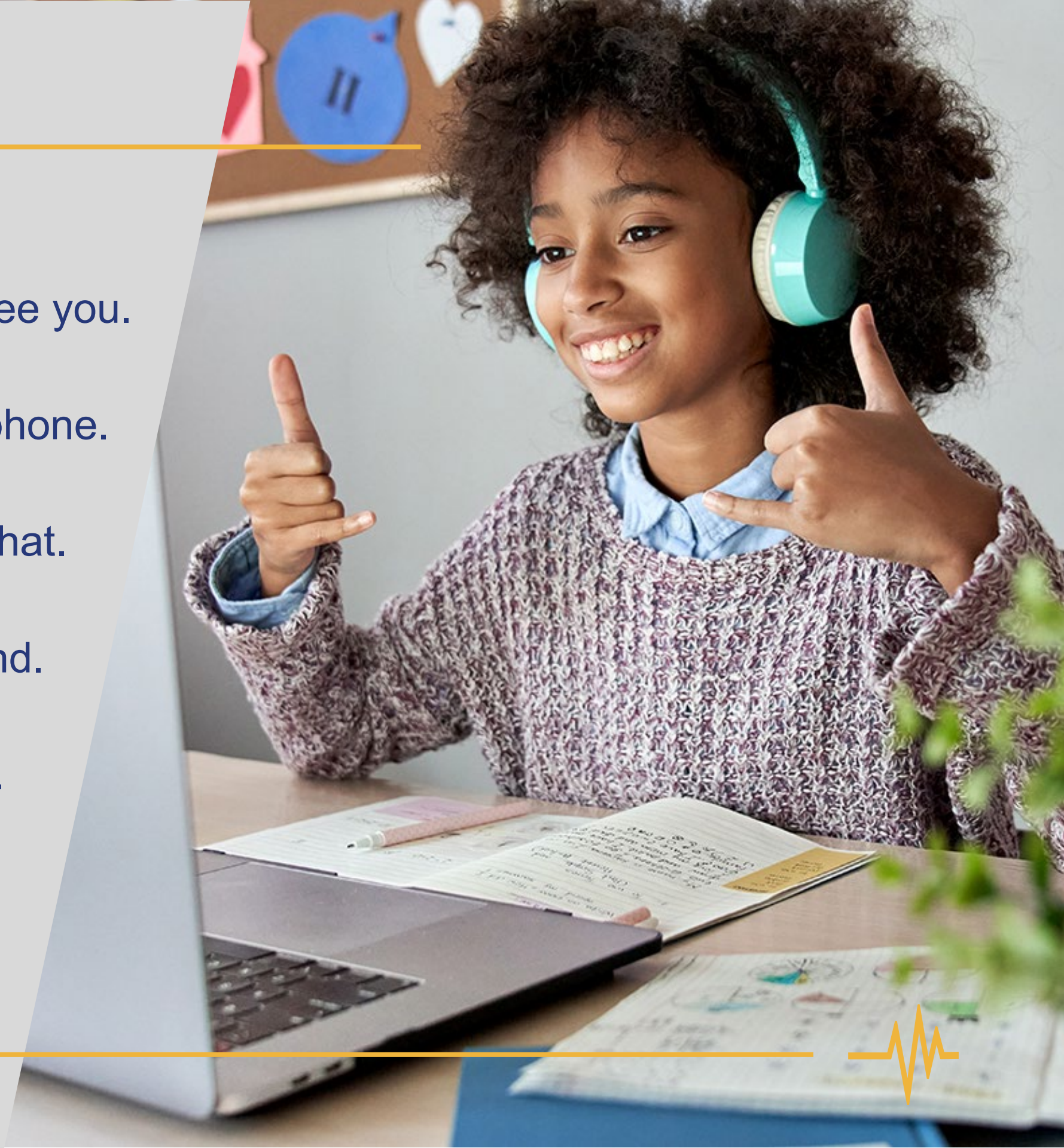
 Please mute your microphone.

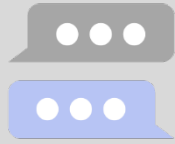
 Questions? Put them in the chat.

 There will be an open forum at the end.

 **REC** This webinar will be recorded.

 Recording and slides will be shared.





Please put your name and agency in the chat.



Not on our mailing list? Put your email, and we will add you.

Specify “Planning, Coalition, or both” and we will make sure you are added to the right lists!



Planning List:
General health data,
Streaming Movie Series,
Information Education.



Coalition List:
Emergency
preparedness and
response.



Who is the Health Planning Council of SWFL?

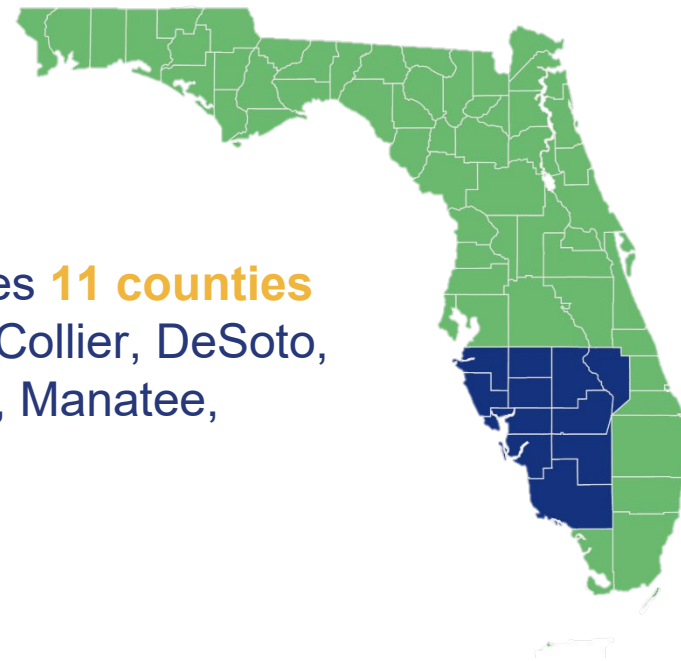
HPC's Mission

We are committed to improving the health and wellness of our community with **PRIDE**.

- **P**roviding & promoting early health intervention
- **R**educing health disparities
- **I**ncreasing access to quality health-related services
- **D**etecting & eliminating gaps in related services
- **E**ducating & collaborating

HPC Areas Served

Through its various programs, HPC serves **11 counties** in southwest Florida including Charlotte, Collier, DeSoto, Glades, Hardee, Hendry, Highlands, Lee, Manatee, Okeechobee, and Sarasota Counties



HPC's Programs

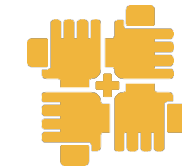
Early Intervention



Infant Mental Health



Health Planning



Healthcare Coalition



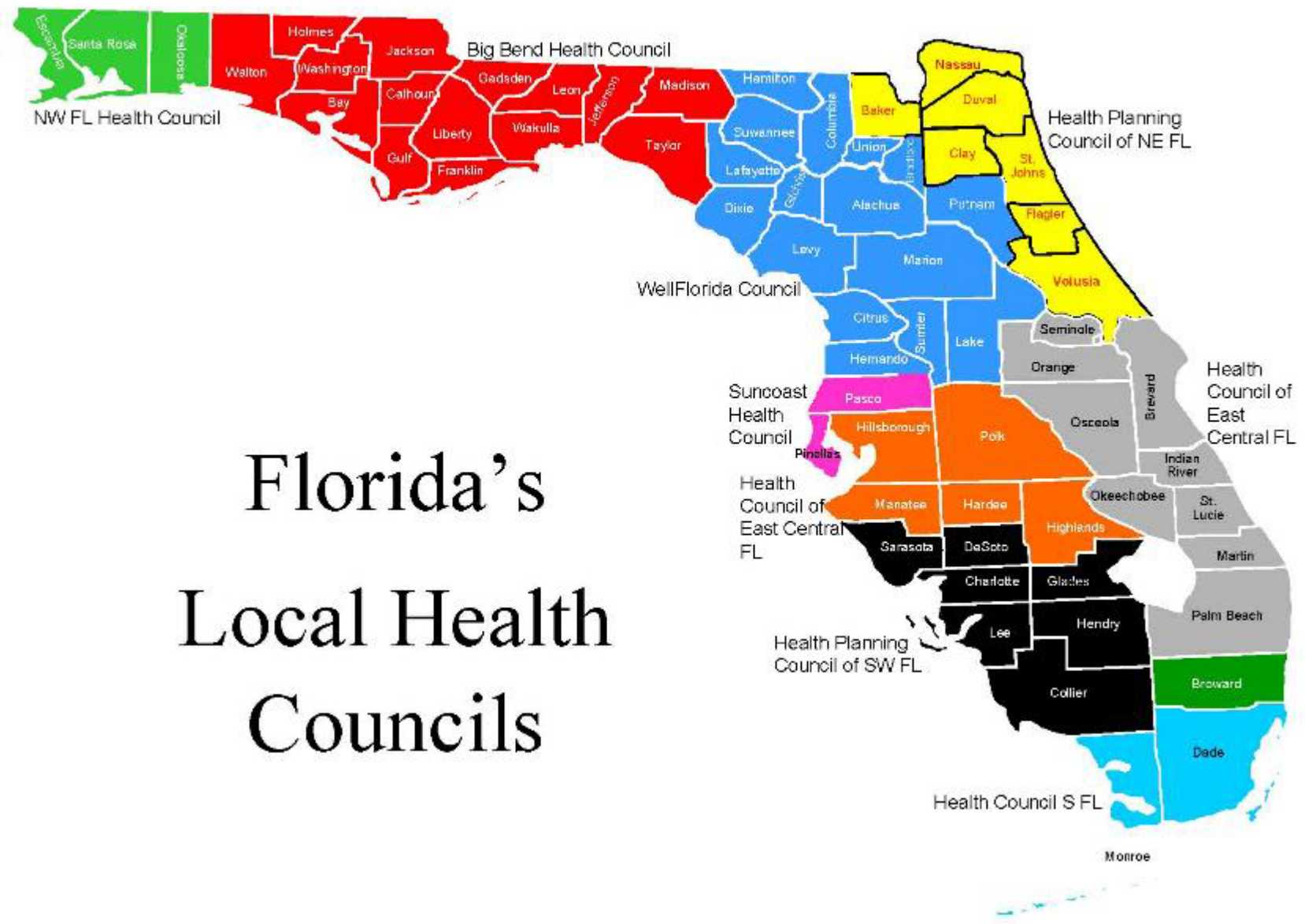
ACA Navigator



HOPWA



Health Councils



Florida's Local Health Councils

<https://www.flhealthplanning.org/health-council-members/>

The Health Council of Southwest Florida is one of eleven private Local Health Planning Councils established by Section 408.033 Florida Statutes (F.S.) to conduct regional health planning and implementation activities. Each council's district is designated in Section 408.032, F.S.

Health Planning



HPC's Health Planning team works with local health departments, hospitals, Federally Qualified Health Centers (FQHCs), and other health-related organizations on various planning projects to improve the health of Southwest Florida, particularly those most vulnerable.

Projects include strategic planning, community health assessments, project & contract management, data collection & analysis, grant writing, meeting facilitation, community surveys & focus groups, and more.

Early Intervention



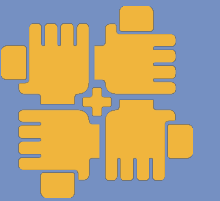
Early Intervention programs support families and caregivers to increase their child's participation in daily activities and routines that are important to the family. Services are delivered to the child and their caregivers in the natural environment and may include speech, physical therapy, and other types of services based on the needs of the child and family. HPC offers several EI programs, including Early Steps, community-based playgroups, AAC services, and the GAP program.

Infant Mental Health



Infant mental health is the social-emotional development, relationships, and behaviors of children from birth to 3 years old.

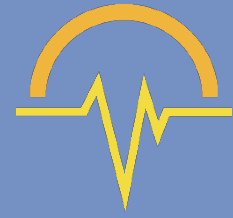
Health Planning



The Health Planning department partners with local agencies to improve the health of SWFL, particularly those who are most vulnerable. Projects include strategic planning, community health assessments, project & contract management, data collection & analysis, grant writing, meeting facilitation, community surveys & focus groups, and more.

HPC Program Overviews

Healthcare Coalition



The Southwest Florida Healthcare Coalition brings together partners across 9 counties to develop healthcare emergency preparedness response and recovery capabilities through collaboration, training, and planning.

ACA Navigator



The Navigator program provides free, unbiased, and confidential ACA health insurance assistance to consumers. It's a service that helps individuals and families navigate the complex health insurance system and provides assistance with enrolling in a health plan, understanding healthcare benefits, and accessing healthcare services.

HOPWA



We are the project sponsor for the Housing Opportunities for Persons with AIDS (HOPWA) program. This HUD-funded program offers assistance to eligible households to increase housing stability and improve the quality of life for clients and their families.

Newly Updated, Unintentional Injury Fact Sheet

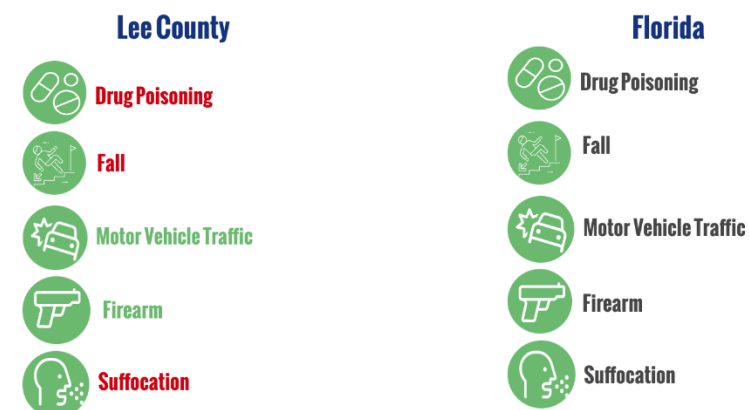
[Click here to access fact sheet](#)

Focus On... Unintentional Injury



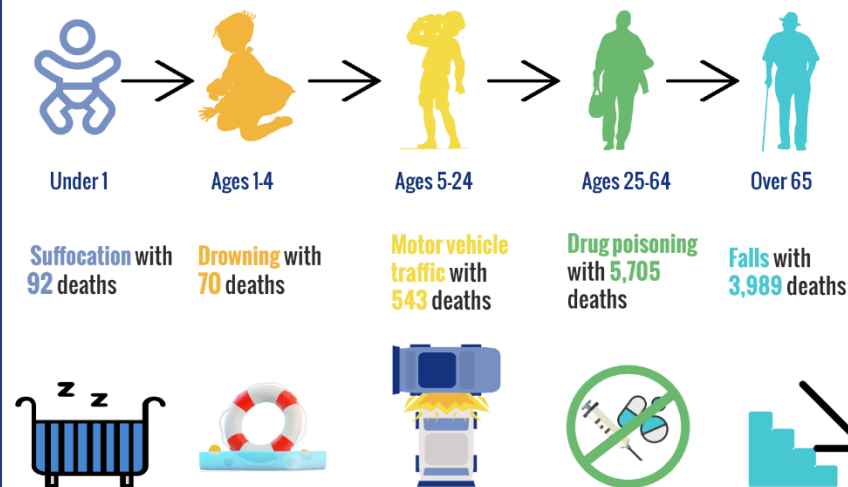
Lee County

2023 Leading Causes of Fatal Injury, All Ages¹



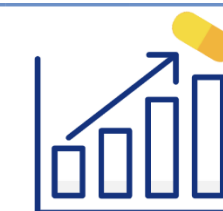
We compared the fatal injury rates of each category between the county and the state. If the data category is in **green** that means the rate is **better** than the Florida average, if it is **red** it is **worse** than the Florida average.

Leading Cause of Fatal Unintentional Injury in Florida Through the Ages, 2023¹



The death rate from unintentional injury by **drug poisoning** in Lee County from 2021-2023 is **higher** compared to the Florida average (39.2 vs 32.4)¹

In Lee County, the rate has slightly **increased** from 32.7 in 2016-2018 to 39.2 per 100,000 in 2021-2023¹



¹ Florida Department of Health, Bureau of Vital Statistics

For more information scan the QR code

Introducing Our Partner for Today's Webinar



Julie Noble, Coordinator – Safe Kids Southwest Florida

Vilmarie Colon – Pediatric Injury Prevention Specialist

Tina Fleming – Pediatric Injury Prevention Specialist

Pediatric Care Task Force



Dedicated to identifying and eliminating gaps related to pediatric needs in times of emergency.



Meeting monthly, next meeting is on:

May 20, 2025
2pm – 3pm

Guest Speaker:
Dr. Ram Velamuri

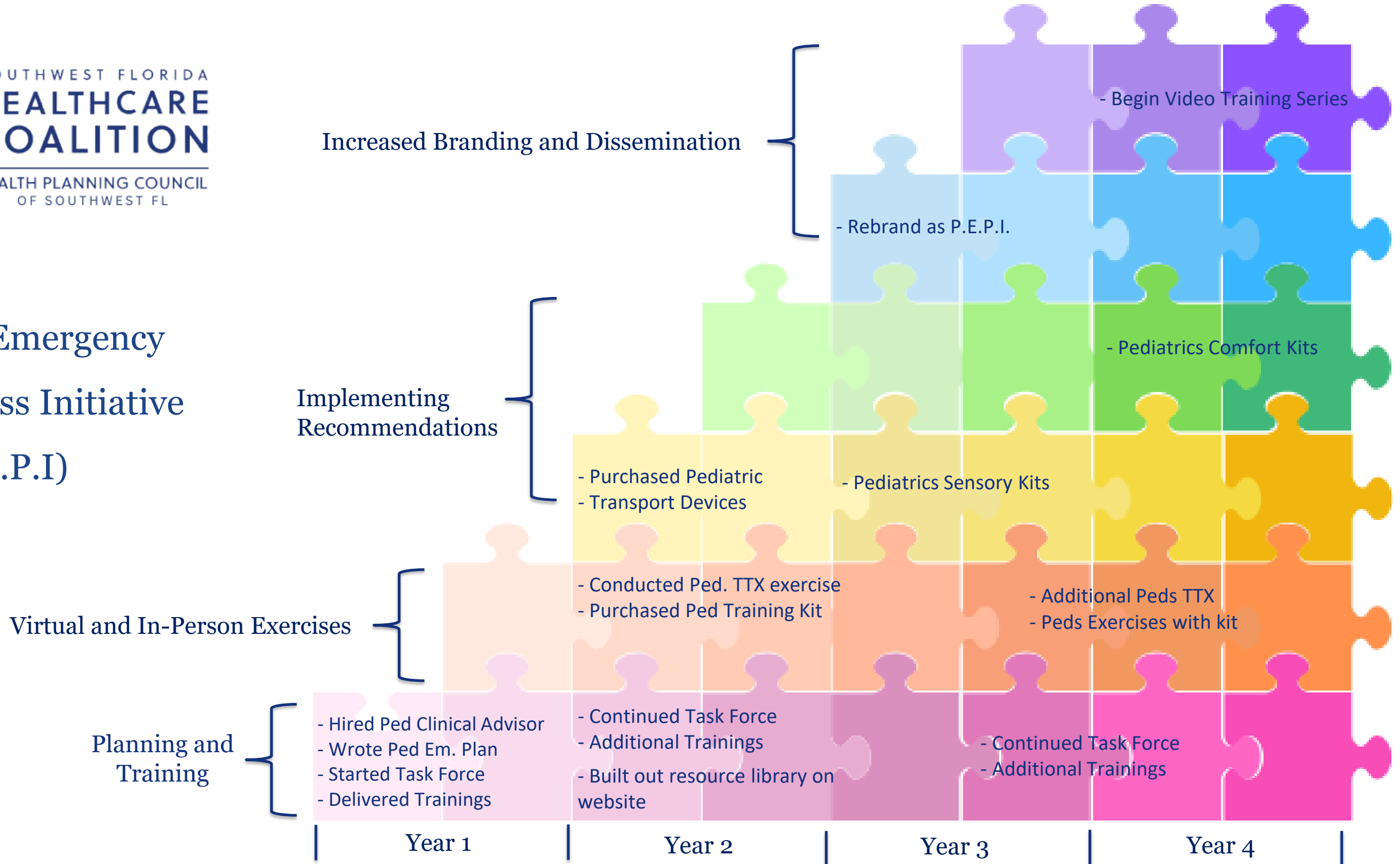
Will speak on how burns affect kids differently, what they are more at risk for, especially during a disaster, as well as tips and tricks





SOUTHWEST FLORIDA
**HEALTHCARE
COALITION**
HEALTH PLANNING COUNCIL
OF SOUTHWEST FL

Pediatric Emergency Preparedness Initiative (P.E.P.I.)



P.E.P.I Comfort Packs



[Create Virtual Sample](#) [Download](#)

[Create Virtual Sample](#) [Download](#)



Join us for our next event!

What: SWFL Health Insights: Profiles Launch & HPC in Action

When: May 29, 2025, 2:00pm

Where: Zoom

How to register: [click here](#)



Tell Us How We Did

Scan QR for Satisfaction Survey



How to Contact Us



Health Planning Council of Southwest Florida



Phone: 239-433-6700



Email: Planning@hpcswf.com



Website: Hpcswf.com